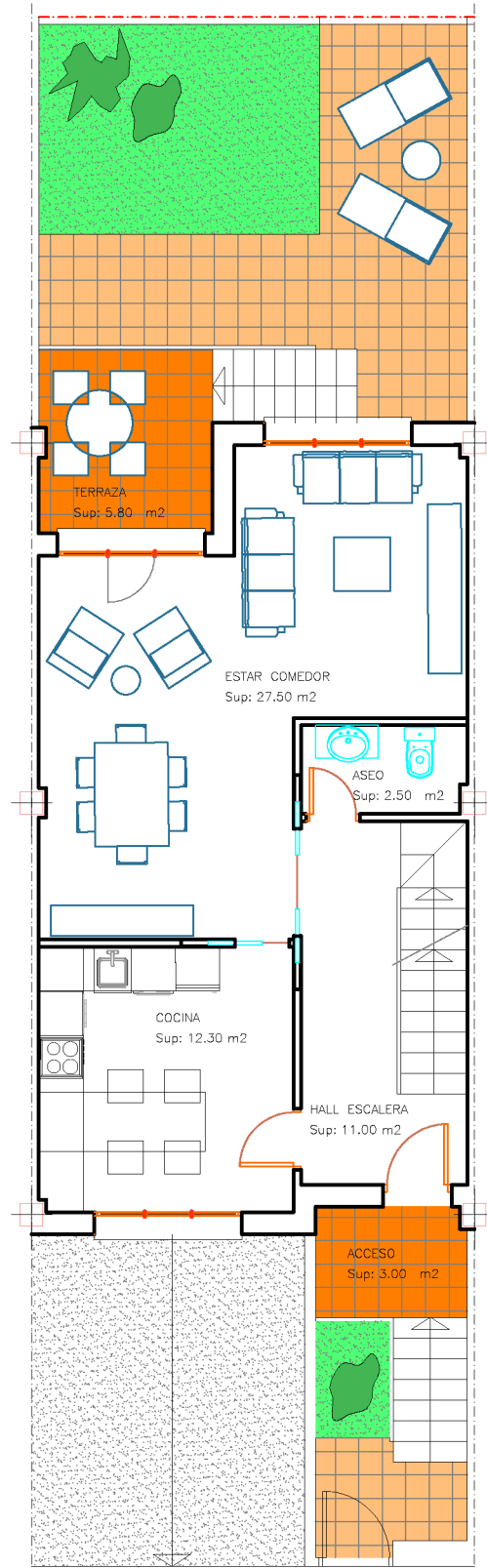


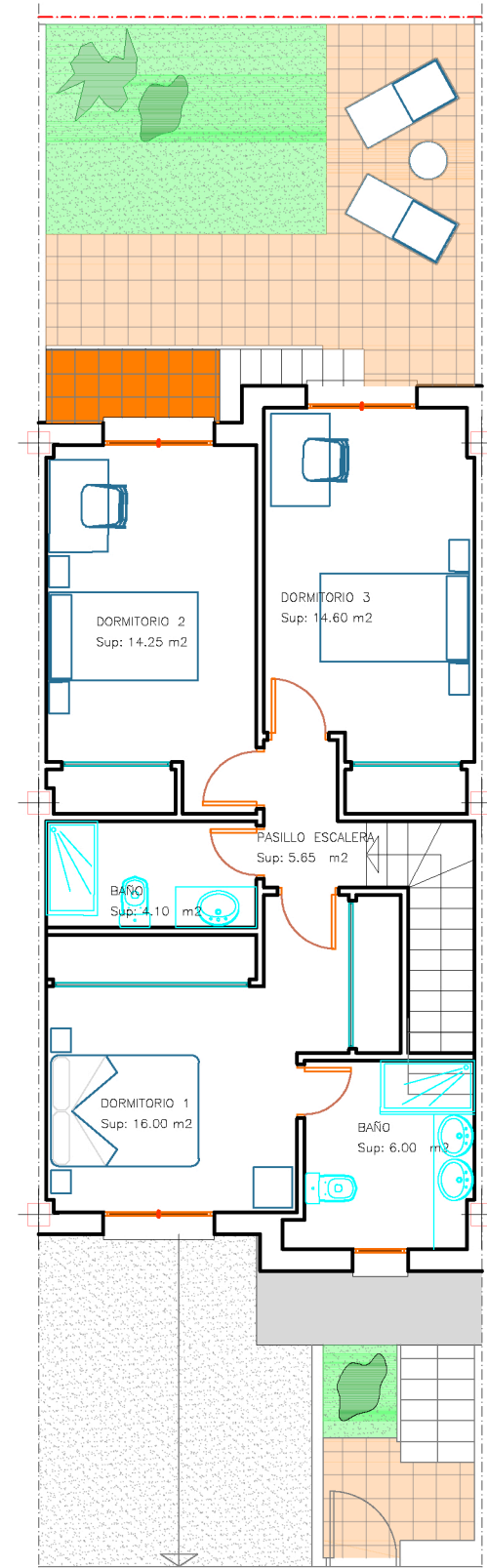
PLANTA SEMISÓTANO

SUP. UTIL: 56.95 M2
 SUP. CONSTRUIDA: 63.70 M2



PLANTA BAJA

SUP. UTIL: 56.20 M2
 SUP. CONSTRUIDA: 61.50 M2



PLANTA PRIMERA

SUP. UTIL: 60.60 M2
 SUP. CONSTRUIDA: 69.15 M2

TOTAL

SUP. UTIL: 173.75 M2
 SUP. CONSTRUIDA: 194.35 M2